

Data -> C:\Users\Public\Documents\ChemStation\1\Data\SE17OCT 2023-10-17 16-51-41\ ->
Sample-> CPT22010446-21-C1-50deg-1h

Injection Date : Tue, 17. Oct. 2023

Seq Line : 8

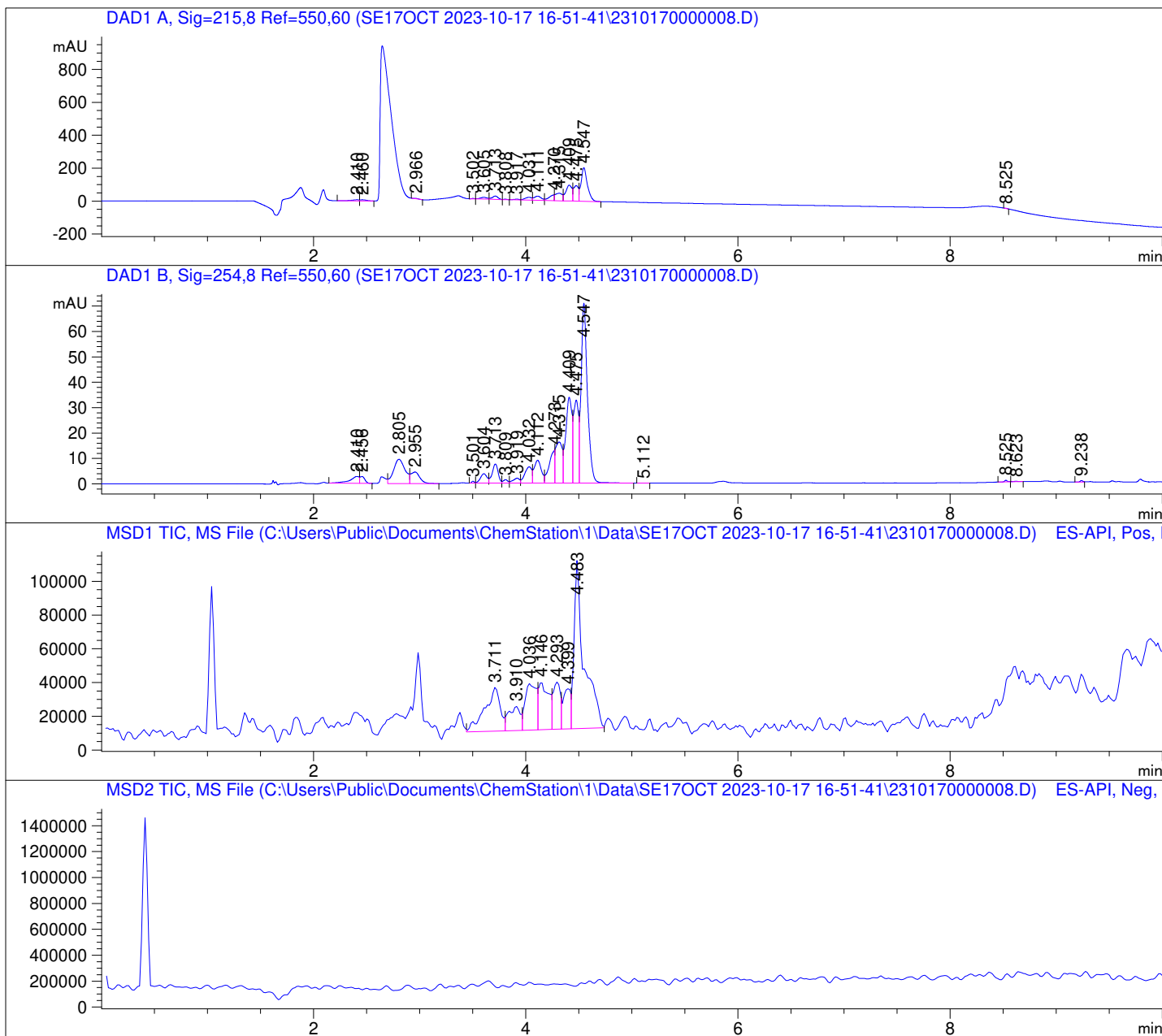
Location : 52

Inj. Vol. : 2 µl

Acq. Method : C:\Users\Public\Documents\ChemStation\1\Data\SE17OCT 2023-10-17
16-51-41\22010446 LCMS-6.M

Analysis Method : C:\Users\Public\Documents\ChemStation\1\Data\SE17OCT 2023-10-17
16-51-41\22010446 LCMS-6.M (Sequence Method)

Waters XBridge Phenyl (4.6 * 150 mm; 3.5 µm); 0.05% TFA (aq) / AcN: 100/0 (0.0 min) -
-> (6.0 min) --> 70/30 (0.0 min) --> (2.0 min) --> 10/90 (2.0 min); Flow: 1.0 ml/min;
MSD1 = positive; MSD2 = negative



DAD1 A, Sig=215,8 Ref=550,60

| Peak # | Ret. Time [min] | Area [mV *s] | Area % |
|-----------|--------------------|-----------------|-----------|
| 1 | 2.410 | 34.176 | 1.498 |
| 2 | 2.460 | 26.610 | 1.166 |
| 3 | 2.966 | 8.756 | 0.384 |
| 4 | 3.502 | 4.537 | 0.199 |
| 5 | 3.605 | 49.545 | 2.171 |
| 6 | 3.713 | 77.346 | 3.389 |
| 7 | 3.808 | 6.351 | 0.278 |
| 8 | 3.917 | 15.849 | 0.694 |
| 9 | 4.031 | 76.715 | 3.361 |
| 10 | 4.111 | 116.234 | 5.093 |
| 11 | 4.270 | 119.376 | 5.231 |
| 12 | 4.315 | 207.576 | 9.095 |
| 13 | 4.409 | 390.683 | 17.119 |
| 14 | 4.475 | 308.568 | 13.521 |
| 15 | 4.547 | 838.023 | 36.720 |
| 16 | 8.525 | 1.865 | 0.082 |

DAD1 B, Sig=254,8 Ref=550,60

| Peak # | Ret. Time [min] | Area [mV *s] | Area % |
|-----------|--------------------|-----------------|-----------|
| 1 | 2.410 | 16.722 | 1.825 |
| 2 | 2.456 | 8.425 | 0.920 |
| 3 | 2.805 | 71.956 | 7.854 |
| 4 | 2.955 | 26.965 | 2.943 |
| 5 | 3.501 | 1.301 | 0.142 |
| 6 | 3.604 | 16.097 | 1.757 |
| 7 | 3.713 | 29.537 | 3.224 |
| 8 | 3.809 | 4.211 | 0.460 |
| 9 | 3.919 | 8.405 | 0.917 |
| 10 | 4.032 | 29.904 | 3.264 |
| 11 | 4.112 | 42.509 | 4.640 |
| 12 | 4.273 | 47.085 | 5.139 |
| 13 | 4.315 | 70.413 | 7.685 |
| 14 | 4.409 | 139.024 | 15.174 |
| 15 | 4.475 | 106.674 | 11.643 |
| 16 | 4.547 | 294.232 | 32.114 |
| 17 | 5.112 | 0.141 | 0.015 |
| 18 | 8.525 | 1.060 | 0.116 |
| 19 | 8.623 | 0.368 | 0.040 |
| 20 | 9.238 | 1.167 | 0.127 |

